



THE ESTATE COMPANY



Embassy Court, St Johns Wood, NW8 9SX

£4,500,000 Leasehold

 3  1  2

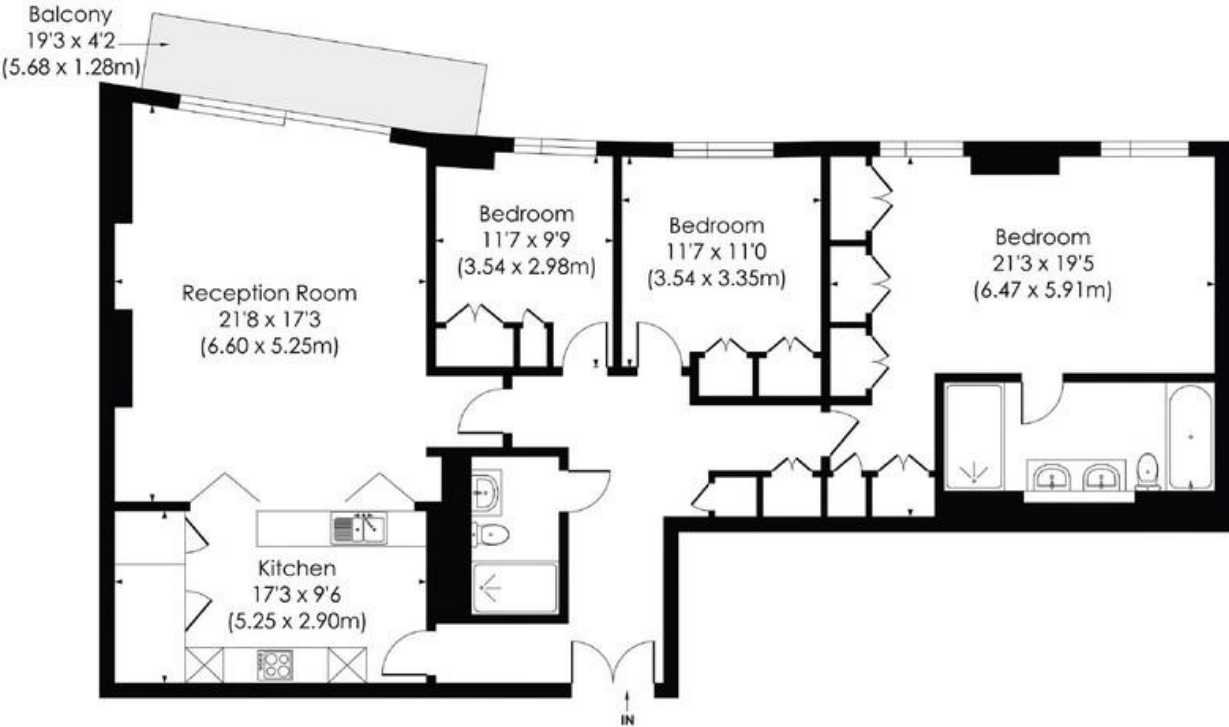
This spacious (1501 sq ft) three bed apartment situated on the fifth floor of this prestigious apartment building. The property comprises master bedroom with bespoke en suite bathroom, second double bedroom with double wardrobes and shower room, third bedroom, bespoke kitchen with integrated appliances leading through to an open plan reception / dining room and a balcony. The apartment further benefits from double height windows with views of St John's Wood, 24 hour concierge and an underground parking space. Embassy Court is located on Wellington Road giving close proximity to the West End, Regent's Park and the shops, bars and restaurants of St John's Wood High Street.





EMBASSY COURT, NW8

Approx. Gross Internal Floor Area
1501 Sq. ft/139.4 Sq. m



FIFTH FLOOR

© Pixangle Property Marketing Ltd. info@pixangle.com Tel: 0208 870 2118



This floor plan has been prepared for the purpose of illustration only in accordance with the latest RICS code of measuring practice and is not to scale. All measurements and areas are approximate and whilst every effort has been made to ensure the accuracy of the plan contained here, no responsibility is taken for any error, omission or misstatement.

Whilst every attempt has been made to ensure the accuracy of the floor plan contained here, measurements of the doors, windows, rooms and any other items are approximate and no responsibility is taken for any errors, omissions, or mis-statement. This plan is for illustrative purposes only and should be used as such by any prospective client. The services, systems and appliances shown have not been tested and no guarantee as to the operability or efficiency can be given.